

**A  
STUDENT  
GUIDE TO  
THE IEP**

# **TABLE OF CONTENTS**

- 2 What is a disability?**
- 3 What is a Child Study Team?  
Your Child Study Team Case  
Manager**
- 4 What is an IEP?**
- 5 Why do Students with  
Disabilities Need an IEP?  
What is the purpose of an IEP?**
- 6. Where is the IEP developed?**
- 7. Who attends the IEP meeting?**
- 8. How long does an IEP meeting  
last?**
- 9. Why should I participate in an  
IEP meeting?  
What can I do to help develop  
my IEP?**
- 10. Writing your IEP**
- 11. My Strengths**
- 12. My Needs**

### ***What is a disability?***

A disability is a condition that may make some things challenging or difficult for a person.

***Did you know that 1 out of 5 Americans has a disability?***

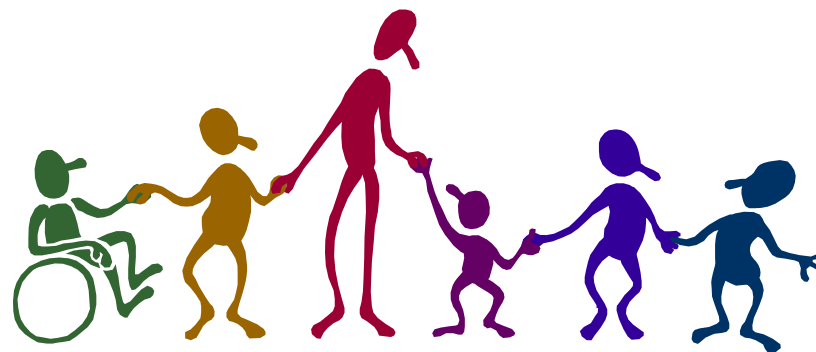


### ***What is a Child Study Team?***

The Child Study Team consists of School Psychologists, Learning Consultants, and School Social Workers. The team has a number of responsibilities including consultation, identification, diagnosis, classification and formulation of recommendations for remediation of learning and other disabilities. The Child Study Team collaborates with school personnel, family members, students, and other significant people to make decisions about educational programs. Collectively, the involved members are called the IEP Team.

**Your Child Study Team Case Manager is:**

---



## ***What is an IEP?***

IEP stands for *Individualized Education Plan*.

The IEP is a written document that describes the educational plan for a student with a disability.

Among other things, your IEP talks about your disability, what skills you need to learn, what you'll do in school this year, what services your school will provide, and what kinds of classes you will be assigned.



## ***Why do Students with Disabilities Need an IEP?***

Having an IEP is a law for all students with disabilities. The Individuals with Disabilities Education Act (IDEA) requires each student with disabilities who receives special education services to have an IEP, **that's an educational program written just for you!** The IEP helps the school meet your special needs so that you can be successful in school.

## ***What is the purpose of an IEP?***

The purpose of the IEP is to make sure that everyone- you, your family, and school staff—knows what your educational program will be this calendar year.

### ***Where is the IEP developed?***

The IEP is developed during an IEP meeting. The people who are concerned with your education meet, discuss, and develop your IEP goals for the year.



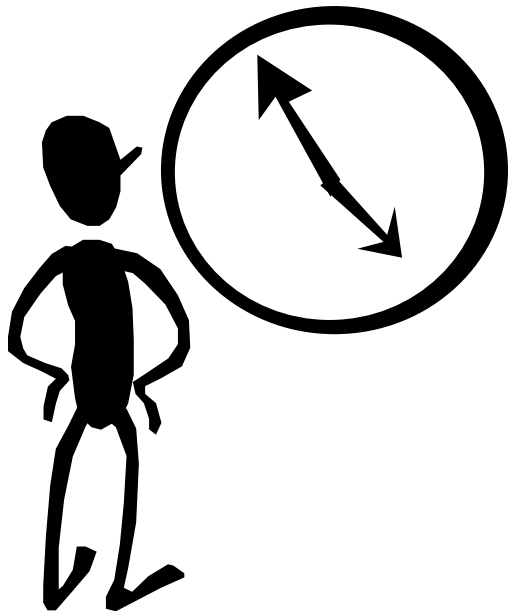
### ***Who attends the IEP meeting?***

A team of individuals will help write your IEP as listed below. Some are required by law to come to the meeting.

- You
- Parents/Guardians
- At least 1 General Ed teacher
- At least 1 Special Ed teacher
- Child Study Team Members
- Speech/Language Therapists
- Occupational Therapists
- Physical Therapists
- Other Specialists
- Counselors
- School Nurses
- Administrators
- Other people who know your strengths and needs

### ***How long does an IEP meeting Last?***

Approximately 30 minutes to 1 hour.



### ***Why should I participate in an IEP meeting?***

It's your educational program everyone will be discussing at the meeting! Your opinions are an important part of this discussion.

### ***What can I do to help develop my IEP?***

1. Talk to your parents, case manager, and teachers
2. Review your last IEP
3. Think about your strengths and needs in school
4. Practice what you want to say at the meeting.

## ***My Strengths***

### ***Writing Your IEP***

- What is your disability called?
- How does your disability affect you at school? At home? *(for example, what things in school are harder because of your disability?)*
- What do you think is important for other people to know about your disability?



- Make a list of classes you take.
- Which is your best class?
- What can you do well in this class? These are your **strengths**.  
(Example: read, write, listen, work in groups, work alone, draw, do your homework, your interest in the subject, your memory, patience, determination, effort, the help of others (what, specifically?), the way the teacher presents information...etc.)



## ***My Needs***

- What class is hardest for you?
- What's the hardest part of this class for you?  
These are the areas you need to work on during the school year: paying attention, reading the book, listening, staying in the seat, remembering new information, doing homework, doing work in groups...etc.

What accommodations would help you do better in this class?

*Information modified from online document by: Marcy McGahee-Kovac*  
National Information Center for Children and Youth with Disabilities (NICHCY)

